



Pendeek Danzey Green,, Tanworth-in-arden, Solihull, B94

Price Guide £1,750,000

- Set back from the road behind a gated entrance with sweeping driveway.
- A conservatory garden room enjoying a delightful sunny aspect.
- Double garage and ample parking for multiple cars.
- Planning permission granted to develop further.
- Five bedrooms including principal suite.
- A kitchen with utility and covetable pantry.
- Immaculately landscaped gardens extending to 1.75 acres offering complete privacy.
- Classically designed reception rooms with garden views.
- Multiple outbuildings including studio and workshop.
- Approx. 3,724 sq ft including outbuildings

Pendeeek, Tanworth In Arden, B94 5BG

Approximate Gross Internal Area = 261.3 sq m / 2813 sq ft
 Outbuildings = 84.6 sq m / 911 sq ft
 (Including Double Garage)
 Total = 345.9 sq m / 3724 sq ft

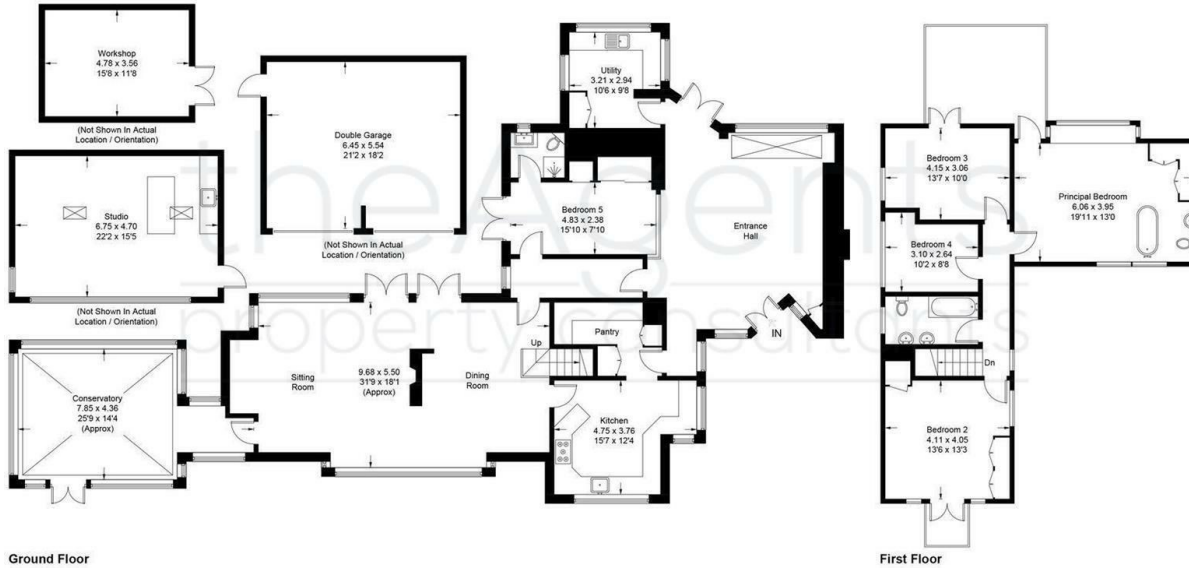
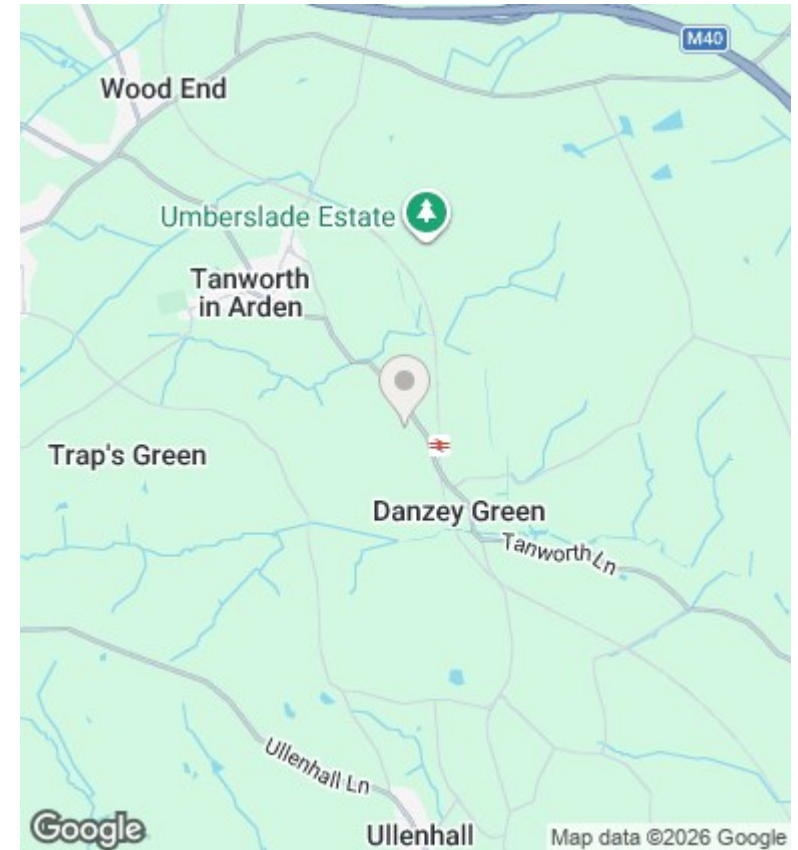


Illustration for identification purposes only, measurements are approximate and not to scale.



Directions

Viewings

Viewings by arrangement only. Call 01564 332550 to make an appointment.

Council Tax Band

G

EPC Rating:

E

Energy Efficiency Rating		Current	Potential
<i>Very energy efficient - lower running costs</i>			
(92 plus) A			82
(81-91) B			
(69-80) C			
(55-68) D			
(39-54) E		39	
(21-38) F			
(1-20) G			
<i>Not energy efficient - higher running costs</i>			
England & Wales		EU Directive 2002/91/EC	